

Université Saint-Louis, 30/04/2019

Introducing the European Network for Research Evaluation in the Social Sciences and Humanities (ENRESSH)

Claudia OLIVEIRA
NCP Brussels c/o hub.brussels
coliveira@hub.brussels



Overview

- 1) COST Actions – definition, main features, networking tools**
- 2) COST ENRESSH – mission, objectives, activities**
- 3) Next steps**



COST Actions

What is COST?

COST (CO-operation in Science and Technology) is the longest-running European framework supporting cooperation among researchers, engineers and scholars by enabling them to jointly develop their own ideas and new initiatives across all fields in science and technology, including social sciences and humanities.

Action Features

- Open and expandable participation

Open to all stakeholders, type of institutions, career levels, countries, you can join at any time

- Bottom-up approach

researcher driven, any topic/ multiple topics

- Flexible and light administration

adaptable research and activities, light reporting

- Output and impact oriented

open science, wide sharing of knowledge and results, open access, open innovation

Role of COST in the ERA – 3 Strategic Priorities

1

Promoting and spreading excellence

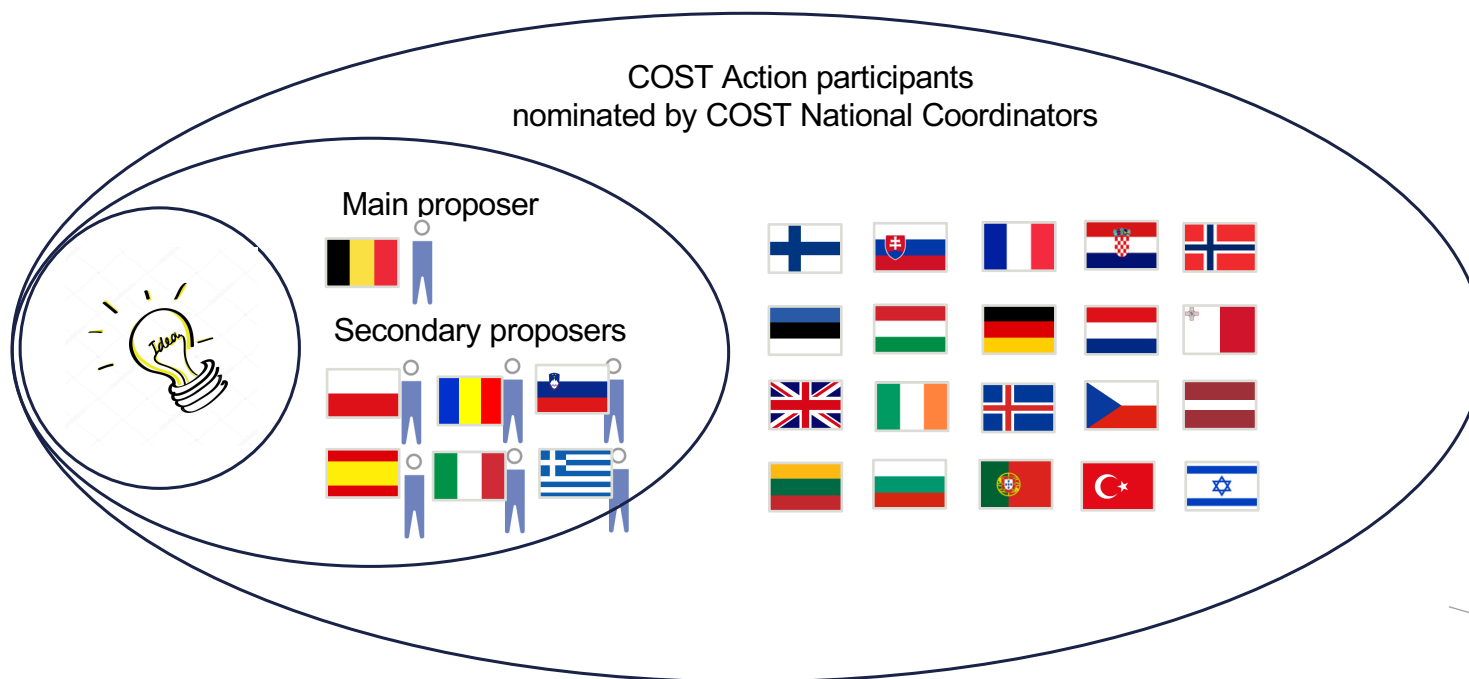
2

Fostering interdisciplinary research for
breakthrough science

3

Boosting careers of young researchers

COST Actions – how to start



Structure

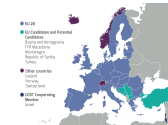
Network



Memorandum of Understanding



4 years



Min 7 countries



~500 000 euros over lifetime



Research coordination and capacity building activities

Networking tools

Research
coordination
&
Capacity
building
activities



Management
Committee
meeting

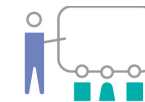
Working
Group
meeting

Conferences

Training Schools

Dissemination

Scientific missions



COST ENRESSH

ENRESSH

ENRESSH stands for European Network for Research Evaluation in the Social Sciences and Humanities.

Starting in April 2016 and ending in April 2020, ENRESSH was proposed by a group of around 20 researchers from 16 different countries. It currently brings together more than 125 participants from 36 different countries.

Main aims

ENRESSH aims to propose clear best practices in the field of SSH research evaluation.

- To improve evaluation procedures in order to take into account the diversity and the wealth of SSH research;
- To make a robust case for the ways in which the SSH add value to the society;
- To help SSH scholars better appropriate their research agenda and overcome fragmentation.



Structure

Chair and Grant Holder: Dr Emanuel KULCZYCKI, Poznań, PL

Action Vice-Chair: Dr Jack SPAAPEN, Amsterdam, NL

Working groups

- WG1. Conceptual frameworks for SSH research evaluation.
 - WG2. Societal impact and relevance of the SSH research.
 - WG3. Databases and uses of data for understanding, monitoring and evaluating SSH research.
 - WG4. Dissemination.
-
- + transversal special interest group for early stage researchers (ECI)
 - + transversal special interest group on book



Activities

- STSM : Short Term Scientific Missions are aimed at strengthening existing networks and fostering collaborations by facilitating researchers participating in a given COST Action to visit an institution or laboratory in another Participating COST Country. All together 17 STSMS were granted: 15 visiting scholars, 8 host researchers.
- Training Schools
- Conferences
- Joint publications
- ENRESSH Day



Example of STSM

- **Ondřej Daniel**, Metropolitan Uni Prague, CZ; Hosts: Tim Engels & Raf Guns, Centre for R&D Monitoring (ECOOM), BE;
- **Main aims**: to provide a qualitative analysis of core journals for 4 SSH disciplines (Anthropology, Political Science, History, Arts, Art history,) located in three countries (PL, CZ, HR);
- **Main activities**: data preparation, analysis, and reporting of findings;
- **Main results**: overview and a comparison; presentation at ECOOM, finalize submission for MDPI journal *Publications*.



Planned activities

- **Valencia** meeting : presentation and publication of good practices manual for national bibliographic databases – **in September**
- Organisation of training school 'Databases and uses of data for understanding SSH research', planned for **October 21-25th in Poznań, Poland**

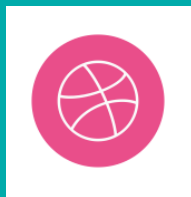


Useful links

- **COST Association:** <https://www.cost.eu/>
- **COST ENRESSH:** <https://enressh.eu/>
- **SSH Integration:** http://ec.europa.eu/research/participants/docs/h2020-funding-guide/cross-cutting-issues/ssh_en.htm



Thank you !



www.ncpbrussels.be
info@ncpbrussels.be



NCP_Brussels



ncpbrussels



Question? Vraag?

110 Charleroisteenweg
1060 Brussel
+32 2 422 00 20 - info@hub.brussels